



# SATPALDA GEOSPATIAL SERVICES

ISO 9001:2008

SATPALDA has completed a project for our client based on DEM generation and contour extraction. The study area lies at Yamagata, located in the Tohoku region of northern Japan. 1m DEM was generated. We had a very short time window to deliver a large area as client needed a high-quality data at that time period but our dedicated and experienced team came into action and with full efforts, we finished our project on time with a high-quality output as required by our client. Like any other project, this was also a complete work flow of Aero triangulation, feature extraction and then DEM generation. We also provide a high-quality Orthophoto on the basis of resulted DEM. In Aerial Triangulation mathematical approach is used to process precise and accurate relationships between the individual image coordinate systems and a defined datum and projection (ground).

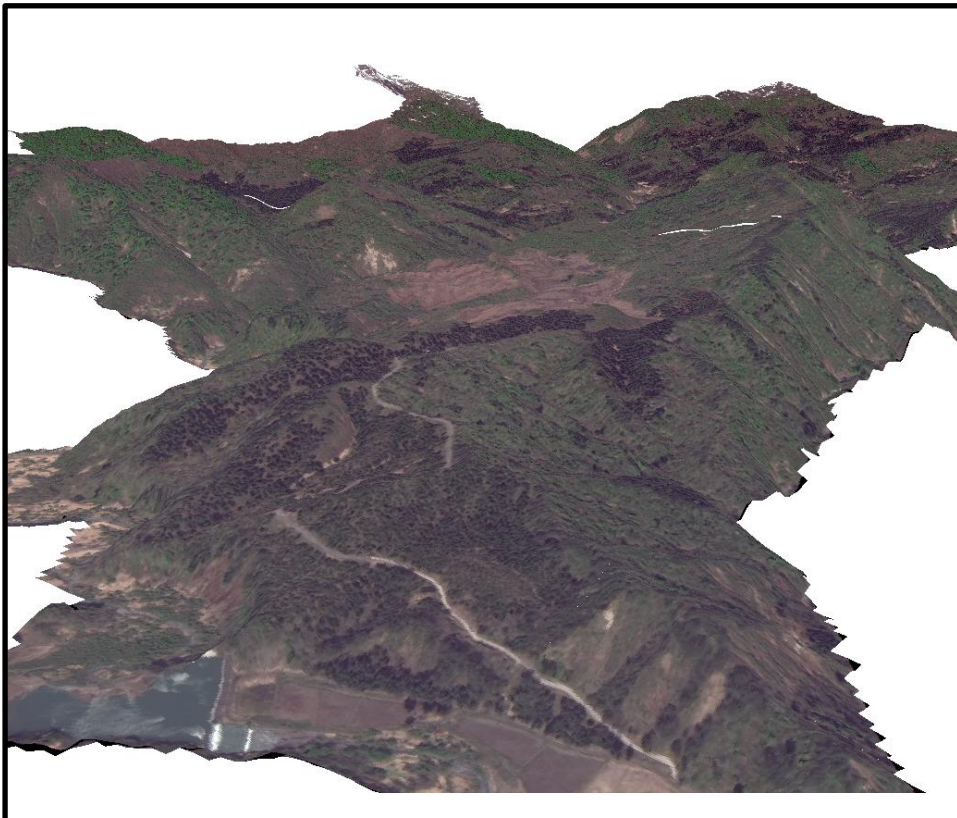


Figure 1. Satellite image of Yamagata basin.

We face a challenge in manual data registration as it was an extreme undulated hilly area covered maximum with vegetation and a part covered by snow. Breaklines and mass points were provided by our team as they have high interpretation skills.

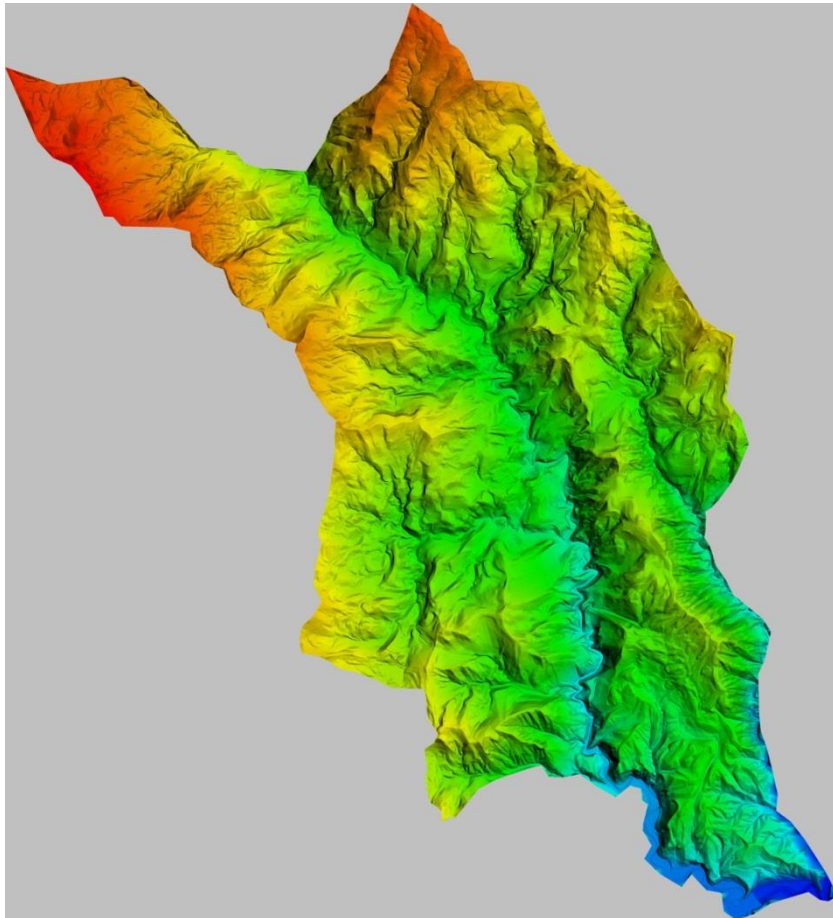


Figure 2. Extracted very high quality DEM

On the basis of resulted DEM, the contour map of 1m, 2m and 3m intervals were generated and delivered to the client. In the contour map, widely spaced contours indicate flat surface, closely spaced contour indicate steep surface and equally spaced contour indicate uniform slope.

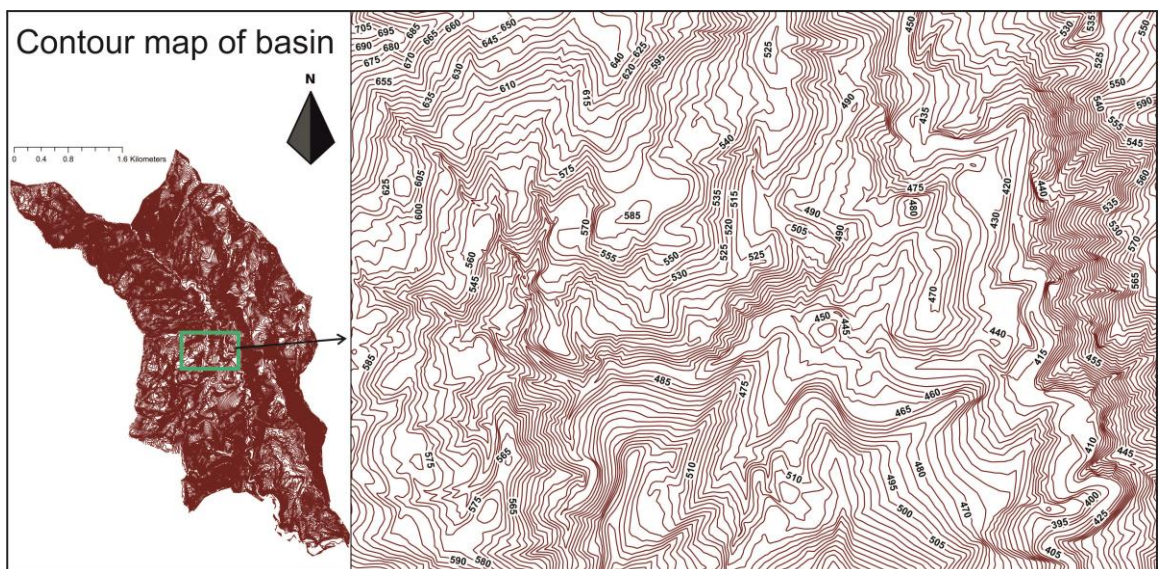


Fig. 3 Contour map at 2m interval

HEAD OFFICE: 1006, KANCHENJUNGA BUILDING, 18, BARAKHAMBA ROAD, NEW DELHI - 110001, INDIA  
 V: +91-11-23312648, 23713396 F: +91-11-2371502

BRANCH OFFICE: CP 2156, FIRST FLOOR, SECTOR 16A, VASUNDHARA, GHAZIABAD-201012, UP, INDIA  
 V: +91-120-4135000, 4130542 F: +91-120-4130543  
 E : info@imageryservices.com W: www.satpalda.com